

Never Without Hope

2022 ANNUAL
REPORT





afflicted
NOT CRUSHED
perplexed
NOT DESPAIRING
persecuted
NOT FORSAKEN
struck down
NOT DESTROYED
2 corinthians 4.8-10

A MESSAGE FROM THE DIRECTOR

Dear Friend of ENLACE,

2022 was yet another difficult year that demonstrated the resilience and resolve of Enlace's staff and local church partners.

Factory, coffee, and service sector jobs lost in the pandemic never returned. Subsistence farmers faced supply chain shortages. Rising costs resulted in sickness and malnutrition among the most vulnerable. Yet even as church leaders encountered enormous challenges, they continually found new ways to serve.

In addition to ministering to families spiritually, we saw church leaders sacrifice their own income and food for others. We saw them express God's love by helping neighbors start new businesses, resurrect family farms, build homes, and improve health through latrines and eco-stoves.

Through exhaustion, and often through tears, these church leaders expressed a deep sense that God has been using these challenges to strengthen and encourage them, create new relationships, and refine their vision of their church as a redeemed body living in Christ-like service to its community. I am reminded daily of the words of the apostle Paul:

We suffer but are not destroyed. We are confused but never without hope. We are criticized but never alone. We are knocked down but we get up again. 2 Corinthians 4:7-10

What an inspiration for ENLACE to have the privilege of knowing, befriending, and walking alongside such incredible pastors and leaders.

Your prayer and financial support enabled Enlace to offer new life to over 100,000 people in Central America and Nepal in 2022. The churches we serve could not do it without you. Thank you!

With great gratitude and joy,



Ronald Bueno
Executive Director



ENLACE IMPACT OF 2022

by the numbers

102,635

people served
directly by projects

1,192

church leaders trained to
design & manage sustainable
community projects

122

church partners
in four countries

286

communities
served

247

projects
completed

19

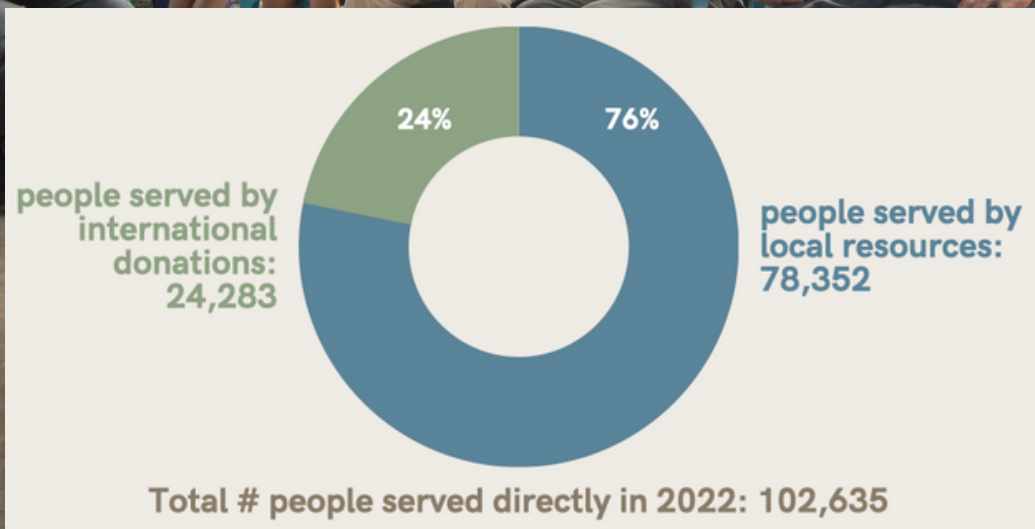
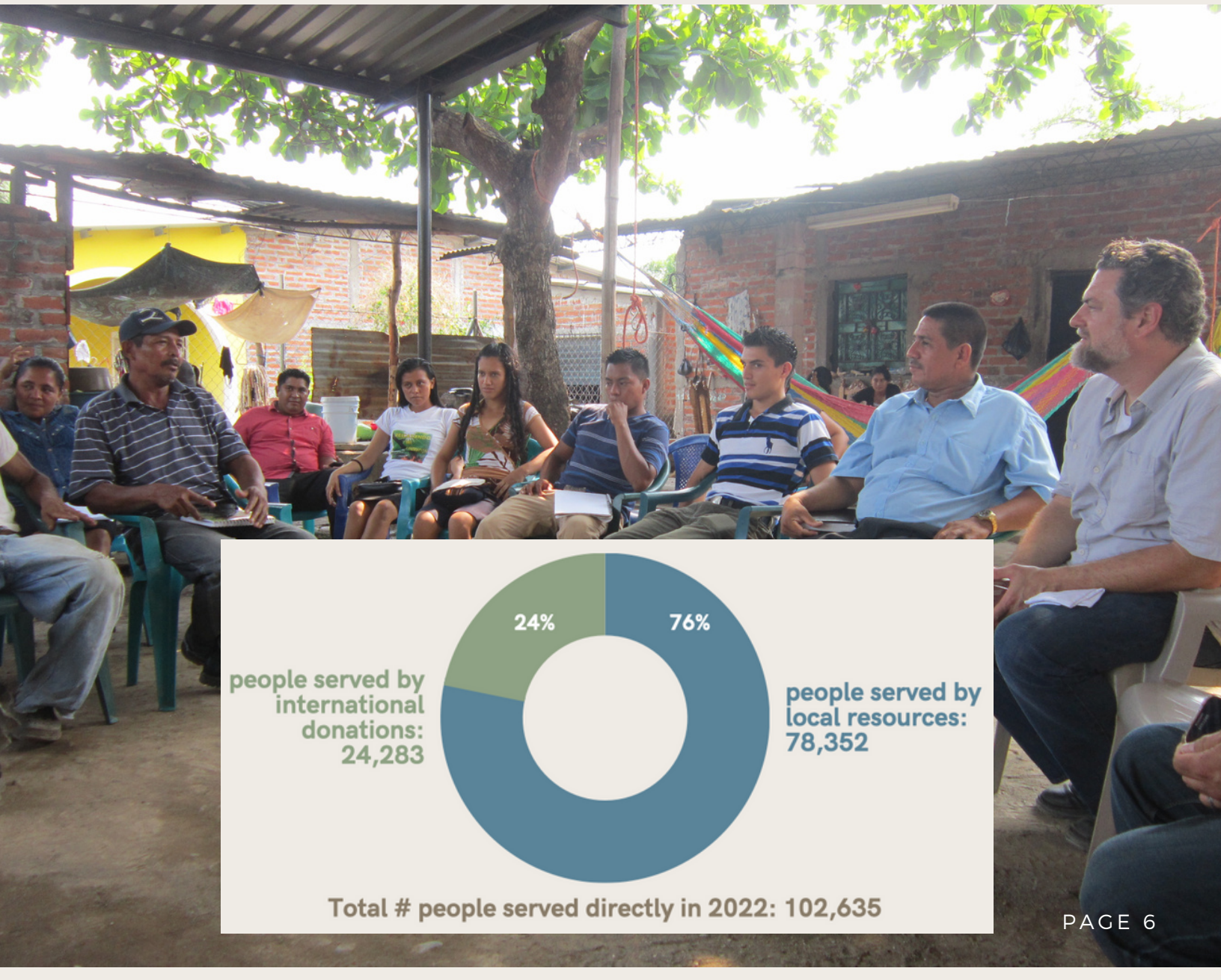
projects
in progress



ENLACE IMPACT OF 2022

LOCAL CHURCHES LEVERAGING LOCAL RESOURCES

The evidence is clear: ENLACE's approach works! Churches that ENLACE has been training for many years have begun to create, implement, and resource their own development projects. These churches are often very small congregations made up of thirty to forty people who are leading community-wide projects. In 2022, 76% of the people served were through projects that church and community leaders developed with their own resources and fundraising. It's exciting to see that the impact of ENLACE's approach, which is to equip local churches and communities to end poverty, is producing fruit that will last for generations to come.



COMMUNITY DEVELOPMENT INITIATIVES



17,916 FAMILIES / 89,844 PEOPLE SERVED



FOOD & NUTRITIONAL AID

42 Churches Involved	344 Church & Community Volunteers	4 Countries	5,231 Total Number of People Served
1,034 Families Fed with Local Resources	5,179 People Fed with Local Resources	216,477 Number of Meals Sourced Locally	216,529 Total Number of Meals Served



AGRICULTURAL RECOVERY AID

44 Churches Involved	417 Church & Community Volunteers Trained	2 Countries	7,560 Total Number of People Served
16 Farmers Served with Local Resources	80 People Served with Local Resources	134 Total Number of Communities Served	1,512 Total Number of Farmers Served

EL SALVADOR

26,295

people served
directly by projects

515

church leaders trained to
design & manage sustainable
community projects

57

local church partners

183

communities served

79

projects completed

12

projects in progress

With more than 70% of the population under or unemployed due to the pandemic, supply chain problems, and inflation, church and community leaders responded by implementing economic development programs.

They helped to start family chicken farms, grew small businesses, strengthened small-scale family farms and started savings groups which generated much-needed income and food for thousands of vulnerable families.

afflicted but not crushed



Sandra, Chicken Farmer,
Family Farm Participant
Chantusnene, El Salvador

5,224 FAMILIES / 26,295 PEOPLE

Families Served in El Salvador by Church & Community Projects*



35

Chicken Farm
Businesses



290

Community
Infrastructure



91

Eco-stoves



160

Electricity



1090

Environmental



152

Healthcare
Assistance



5

Home Gardens



147

Latrines



135

Microenterprises



38

New
Homes



801

Roads



213

Savings
Groups



180

Schools/
Education



335

Storm Julia
Relief



90

Wells & Water
Systems

*project numbers do not include pandemic relief & recovery initiatives

GUATEMALA

19,730

people served
directly by projects

169

church leaders trained to
design & manage sustainable
community projects

21

local church partners

36

communities served

54

projects completed

4

projects in progress

This was a year of strategic growth and incredible fruit. We strengthened the Guatemalan team in order to add new churches in two new regions of the country while strengthening our partnerships with Tearfund, Living Water International, and Habitat for Humanity. Churches worked faithfully with their communities to build new homes, eco-stoves, composting latrines, and water systems.

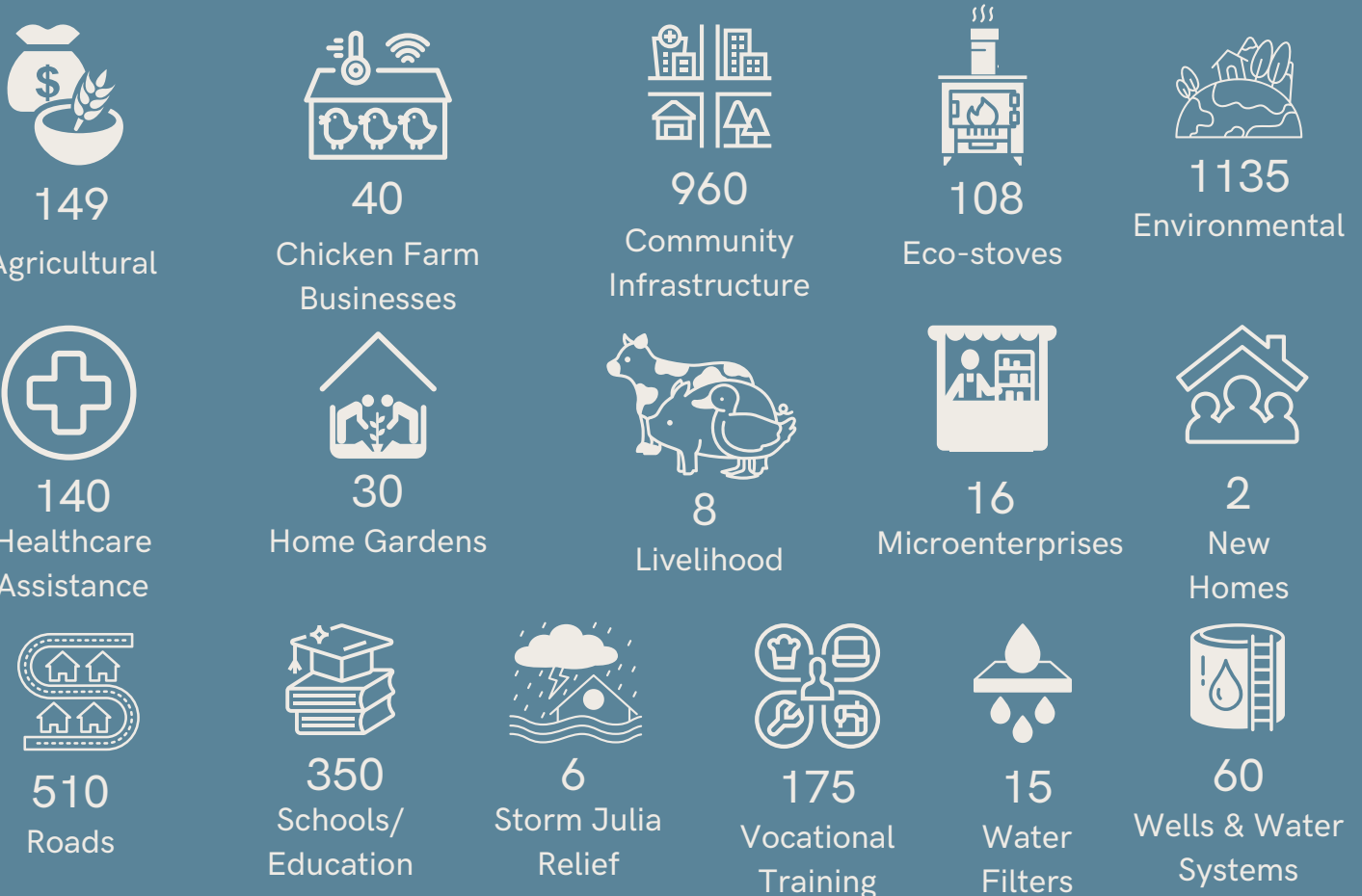
perplexed but not despairing



Gerson de Leon, Director of Operations, ENLACE Guatemala, with local church and community leaders

3,944 FAMILIES / 19,730 PEOPLE

Families Served in Guatemala by Church & Community Projects*



*project numbers do not include pandemic relief & recovery initiatives

NEPAL

15,313

people served
directly by projects

330

church leaders trained to
design & manage sustainable
community projects

26

local church partners

40

communities served

36

projects completed

3

projects in progress

In a primarily Hindu country where Christians are among the most marginalized people, ENLACE Nepal is replete with stories about how Christian church pastors and members are becoming influential leaders in their communities. In many places, leaders have been recognized publicly and have been elected to lead numerous community projects that serve the most vulnerable populations, including livelihood initiatives, agricultural training, schools, and public school projects.

persecuted but not forsaken



Pastor Anil (above) & church leaders in Thapguan, Nepal

3,052 FAMILIES / 15,261 PEOPLE

Families Served in Nepal by Church & Community Projects*



665

Agricultural



235

Community Infrastructure



156

Electricity



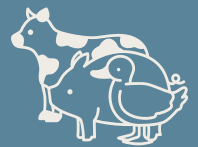
77

Environmental



50

Healthcare Assistance



81

Livelihood



19

New Homes



779

Roads



517

Schools/ Education



132

Vocational Training



341

Wells & Water Systems

*project numbers do not include pandemic relief & recovery initiatives

NICARAGUA

41,297

people served
directly by projects

178

church leaders trained to
design & manage sustainable
community projects

18

local church partners

27

communities served

78

projects completed

In a country where churches are experiencing persecution, the ever-growing number of churches desiring to partner with ENLACE is simply incredible. This year we grew to 18 churches, many of which are located in the remote indigenous region of the Bosawas. By the close of the year, more than 300 churches were added to our waiting list, and we pray that the resources will come to be able to add these partners quickly.

struck down but not destroyed



Church and community leaders
& Enlace staff, Nicaragua

8,242 FAMILIES / 41,297 PEOPLE

Families Served in Nicaragua by Church & Community Projects*



3115

Community Infrastructure



60

Electricity



1370

Environmental



490

Healthcare Assistance



15

Home Gardens



25

Microenterprises



7

New Homes



760

Roads



281

Schools/
Education



506

Storm Julia
Relief



38

Vocational
Training



731

Wells & Water
Systems

*project numbers do not include pandemic relief & recovery initiatives



ENLACE staff from
Guatemala & USA

How Your Support Builds Vibrant & Resilient Communities

Enlace trains and equips church leaders to engage and partner with their community leaders and local organizations over many years to design sustainable initiatives that will transform their communities and regions.

ALL PROJECTS ARE:

LOCALLY IDENTIFIED

churches listen, engage and collaborate with their communities effectively to identify and design projects that meet a felt need with local resources.

LOCALLY FUNDED

every dollar raised internationally is matched and leveraged through local contributions of funds, materials and labor. At least fifty percent of all project costs are contributed by local church, community and government offices.

LOCALLY MANAGED AND SUSTAINED

churches and community organizations are connected, strengthened and empowered to maintain and develop future projects. 100% of projects are managed and financially sustained by church and community organizations.

ENLACE USA Financial Information

2022 & 2021 Statement of Activities

Enlace USA Funding

	2022		2021	
Churches	\$ 1,284,967	60.4%	\$ 1,263,777	53.9%
Individuals	\$ 467,386	22.0%	\$ 592,828	25.2%
Foundations	\$ 311,701	14.7%	\$ 343,724	14.7%
Corporations & Education	\$ 56,100	2.6%	\$ 61,321	2.6%
Other	\$ 7,418	0.3%	\$ 83,842	3.6%
Total	\$ 2,127,572	100.0%	\$ 2,345,492	100.0%

Enlace USA Expenditures

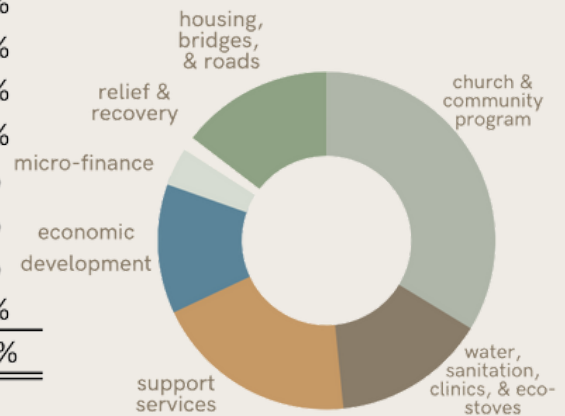
Administration	\$ 149,230	7.3%	\$ 122,869	5.7%
Fundraising	\$ 329,719	16.1%	\$ 365,531	17.0%
US Programs	\$ 68,667	3.3%	\$ 96,686	4.5%
Missionary Volunteers	\$ 44,200	2.1%	\$ -	0.0%
Foreign Programs & Projects	\$ 1,460,482	71.2%	\$ 1,565,542	72.8%
Total	\$ 2,052,298	100.0%	\$ 2,150,628	100.0%

Funding less Expenditures \$ 75,274

\$ 194,864

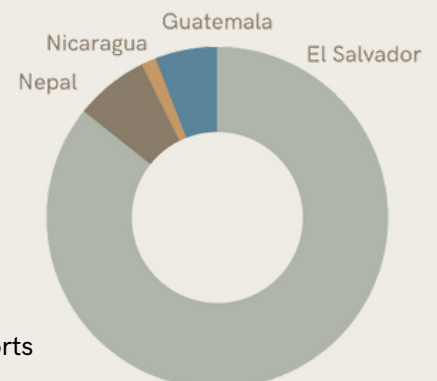
2022 Enlace USA Disbursements for Foreign Programs & Projects

church and community development	\$ 491,173	33.7%
water, sanitation, clinics and eco-stoves	\$ 215,148	14.7%
housing, bridges, and roads	\$ 213,278	14.6%
economic development	\$ 181,308	12.4%
micro finance	\$ 53,545	3.7%
relief and recovery	\$ 19,314	1.3%
center for community transformation	\$ -	0.0%
support services	\$ 286,716	19.6%
total	\$ 1,460,482	100.0%



2022 Enlace Foreign Partners

Enlace El Salvador	\$ 1,251,494	85.7%
Enlace Guatemala	\$ 101,778	7.0%
Enlace Nicaragua	\$ 21,011	1.4%
Enlace Nepal	\$ 86,199	5.9%
Total	\$ 1,460,482	100.0%



*Capin Crouse 2022 & 2021 Audit Report is available online at enlace.link/annual-reports

Never Without Hope

2022 USA Board

Mark Bailey
Timothy Celek
Anthony D'Amato, Chief Gov Officer
Casey Hale, Esq., Secretary
Jason Larry
Trinity Scurto
Amanda Woods
David Zapata

Foundations/Businesses/ Contributors**

Canadian Baptist Ministries
Caterpillar Foundation
CVW Family Foundation
Ellis Family Charitable Foundation
Hess Family Charitable Trust
Oddo Family Foundation
Orange County First AG
Partners Worldwide
World Challenge Inc.
John Houston Custom Homes

International Church Partners*

Broadway Christian Church (Columbia, MO)
Central Christian Church (Wichita, KS)
Cornerstone Baptist Church of West Los Angeles (CA)
Covenant Family Fellowship (Portland, ME)
Crossings Community Church (Oklahoma City, OK)
CrossWay Christian Church (Nashua, NH)
Eastview Christian Church (Normal, IL)
Evangel Family Church (Singapore)
Life.Church (Edmond, OK)
Lutheran Church of Hope (Des Moines, IA)
Meadowbrook Community Church (Champaign, IL)
Northpark Community Church (Fresno, CA)
Port City Community Church (Wilmington, NC)
Rockingham Christian Church (Salem, NH)
The Crossing EPC of Columbia (MO)
The Oaks Fellowship (Red Oak, TX)
The Summit Church (Indiana, PA)
Valley View Christian Church (Littleton, CO)
Willow Creek Community Church South Barrington (IL)

Individuals**

Luke Brzezinski	Alexandra Hunt	Trinity Scurto & Mike Shintani
John & Lois Bueno	Steve & Patty Johnson	Jeffrey & Laurie Shaw
Michelle & Ron Bueno	Kendall & Kristina Kasper	Sara & Andrew Sims
Amanda Conklin	Laurie Kolker	John & Susan Stella
Jason Crow	Bradley & Ginny LaForest	Bill Taylor
Allyson Felo	Linda & Tom Lewis	Rebecca Thompson
John & Siri Fuhler	Stephen & Lisa Mann	Elisa & Troy Van Voorhis
Gregg & Janice Gentry	Frederick & Ana McGough	Emmanuel Vigilia
Todd & Kathy Gordon	Priscilla & Steve McKinney	Richard & Zoe Warner
Rowena Hall in honor of Galen Hall	Jeff & Stephanie McMillen	Daniel & Michelle Wendell
Joyce W. & Don Harter	David Moore	Daniel & Christine Wilhelm
Ami Hileman	Marshal Musselman	Noel & Lenora Wilson
Rebecca & James Huff	Stephen Nuneman	Terry Youngblood
	Jim Reynolds	

*Contributing \$5,000 or more annually **Contributing \$2,000 or more annually