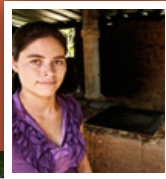




# 2012 ANNUAL REPORT



“ One of the strongest passions in my life is to help those in need. [Our Church] has always had this passion, but we were not organized. ENLACE has given us a clear vision of where, how and why we should serve. ”

Pastor Gerson Rodriguez,  
Dios de la Profecia Church, El Platanar

## ■ LETTER FROM THE DIRECTOR

As we enter into 20 years of ministry, we are excited to report that the momentum is building in El Salvador in an amazing way. Churches across El Salvador have heeded God’s call and walked into their poorest communities, mending broken relationships and addressing the root causes of poverty. They have become strong and vibrant redemptive communities of faith.

Because of your generous support, ENLACE is proud to have equipped and trained 55 churches that served 195 communities in 2012. We completed 67 projects which directly served over 40,000 people. The projects implemented over the past three years are impacting more than 110,000 people on an ongoing basis.

This year, by accompanying 69 local churches, we are poised to take another critical step toward reaching our 2015 goals of 100 churches and 250,000 people served. These church partners have already identified or are implementing 71 projects which will directly impact the lives of 50,000 people. We are also working to grow the credit program by \$200,000 in order to provide 250 businesses with more than \$500,000 in loans. In 2012 we began to explore opportunities for international partnerships, which have resulted in the beginning stages of programs in the U.S. and Nepal.

Thank you for making 2012 a year of profound change and impact! We believe that together we can make 2013 another momentous year for churches wanting to reach out and transform their poor communities. Please help us pray for the new opportunities and challenges. We look forward to continuing our partnership with you and working together to bring Good News to the poor around the world.

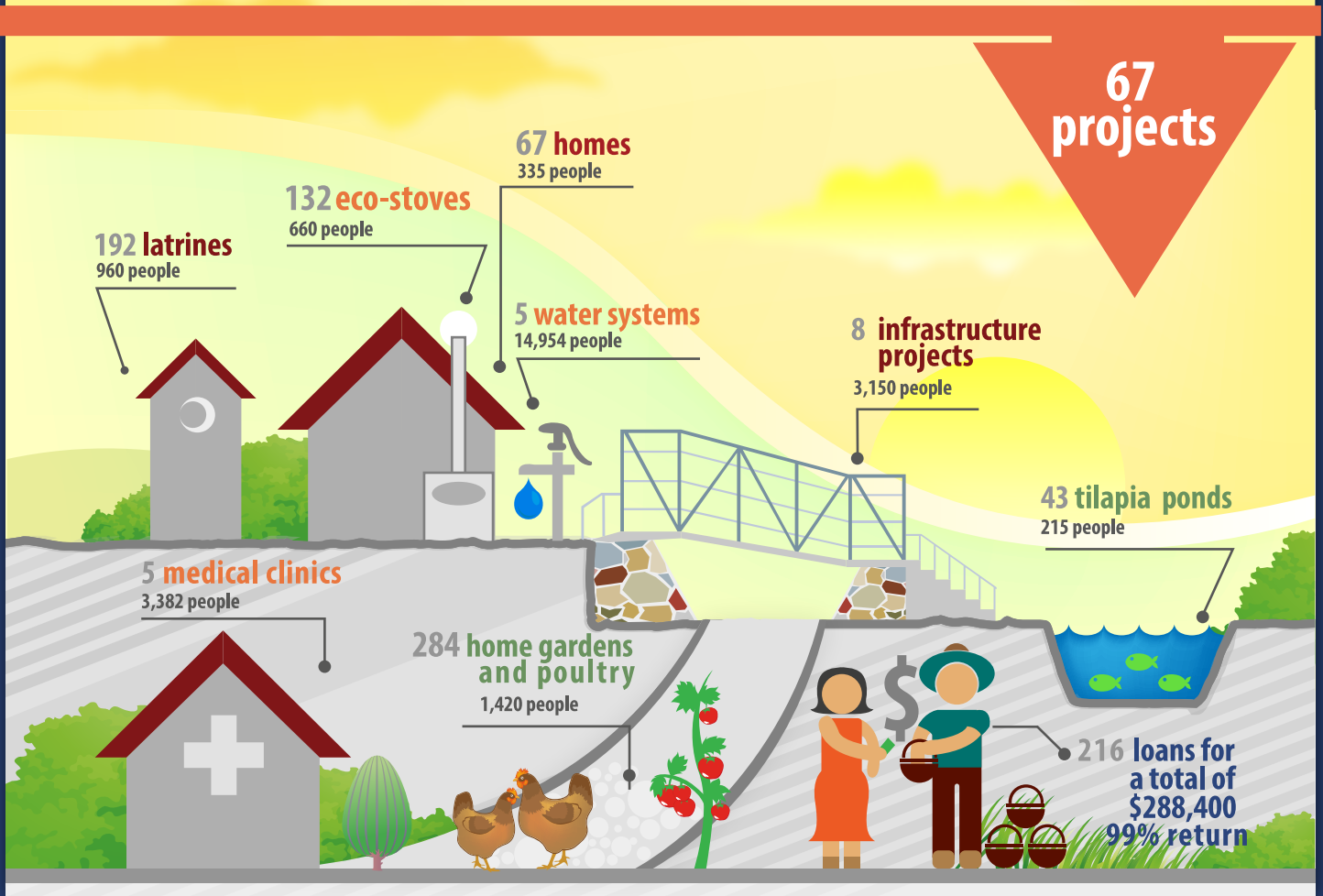
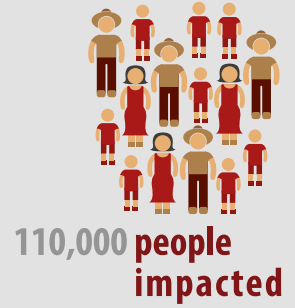
Thank you again for your incredible friendship and support.

Blessings and thank you again,  
Ron Bueno, Executive Director

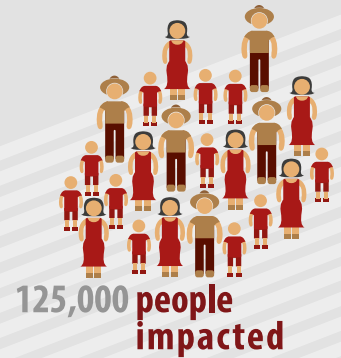
■ *Church and community leaders along with a U.S. serving team pray together before they begin working on the main road in El Progreso.*



2012



2013





“ I CAN FEED MY FAMILY,  
MAKE MONEY...AND  
EMPLOY OTHERS. THIS  
BENEFITS THE ENTIRE  
COMMUNITY.” *Guadalupe Andrade,  
Home garden participant, Pajigua*

Guadalupe Andrade is a beloved and revered presence in her community of Pajigua--so much so that she is called by everyone, young and old, the endearing name of Mama Lupa.

In 2010 a local church began partnering with ENLACE to create a home garden project to reach out to its neighbors. Many residents live on less than a dollar a day and suffer from malnutrition. Home gardens address not only these needs but also the poverty of ideas and opportunity.

Mama Lupa attended the workshops and after her first harvest, she made \$100 in extra income. But she didn't stop there. "When Mama Lupa found out about the home gardens, she didn't see it just as an opportunity for herself but as an opportunity to help others, creating hope," said David Gonzalez, ENLACE Agronomist. In 2012, 12 more home gardens were started directly helping 60 people, mostly mothers and children.



Discover the whole story of Mama Lupa online at [www.enlaceonline.org/lupa](http://www.enlaceonline.org/lupa)

**VISION:** To see **100** churches transforming the spiritual and material lives of **250,000** people in El Salvador. by **2015.**

“ I am experiencing the excitement of working (with our community) and what has made all the difference is that I consider myself not only a pastor of the church...but also a pastor of my community. ”

*Pastor Miguel Angel Bolaños  
Principe de Paz Church  
Las Delicias  
San Jose El Naranjo Region*

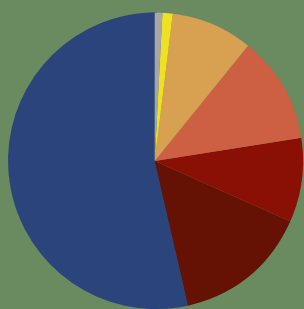


## ■ FINANCIAL OVERVIEW

ENLACE USA REVENUE	2012		2011	
Churches	\$ 639,252	38%	\$ 708,288	43%
Individuals	\$ 182,904	11%	\$ 222,778	14%
Foundations & Institutions	\$ 842,608	50%	\$ 688,039	42%
Corporations	\$ 13,226	<1%	\$ 9,539	<1%
Other	\$ 11,255	<1%	\$ 13,005	<1%
<b>Total</b>	<b>\$ 1,689,245</b>	<b>100%</b>	<b>\$ 1,641,649</b>	<b>100%</b>

ENLACE USA	EXPENDITURES		2011	
Administration	\$ 68,154	4%	\$ 24,260	2%
Fundraising	\$ 76,650	4%	\$ 46,308	3%
U.S. Programs	\$ 125,768	7%	\$ 174,375	12%
Missionary Volunteers	\$ 102,023	6%	\$ 82,000	6%
Foreign Programs & Projects	\$ 1,381,097	79%	\$ 1,132,224	77%
<b>Total</b>	<b>\$ 1,753,692</b>	<b>100%</b>	<b>\$ 1,459,167</b>	<b>100%</b>

## ■ FOREIGN PROGRAMS & PROJECTS \$1,381,097



- Research & Development - \$2,500 <1%
- Emergency Relief & Special Projects - \$7,800 <1%
- Home Gardens & Economic Development - \$123,567 9%
- Church & Community Coaching - \$160,048 12%
- Water, Sanitation, Clinics & Eco-stoves - \$130,135 9%
- Support Services - \$210,049 15%
- Housing, Bridges and Roads - \$746,998 54%

## U.S. BOARD OF DIRECTORS

Larry Kasper, President    Priscilla McKinney  
 John Bueno                    Cristina Robeck  
 Ron Bueno                     Beth Valente  
 Casey Hale

Complete financial review from Capin Crouse LLP is available upon request  
 Complete financial statements available @ [www.enlaceonline.org/financials](http://www.enlaceonline.org/financials)

## U.S. CHURCH PARTNERS\*

Broadway Christian Church, Columbia, MO  
 Cornerstone Baptist Church of West Los Angeles, CA  
 Covenant Family Fellowship, Portland, ME  
 The Crossing Church, Costa Mesa, CA  
 CrossWay Christian Church, Nashua, NH  
 Evangel Family Church, Singapore  
 First Baptist Church of San Diego, CA  
 The Gateway Church, Des Moines, IA  
 Meadowbrook Community Church, Champaign, IL  
 North Park Community Church, Fresno, CA  
 Northeast Christian Church, Louisville, KY  
 Orange County First Assembly of God, Santa Ana, CA  
 SeaCoast Grace, Cypress, CA  
 Timberline Church, Fort Collins, CO  
 Vineyard Christian Church, Pataskala, OH  
 Willow Creek Community Church, Chicago, IL  
 Willow Creek Community Church, Crystal Lake, IL  
 Willow Creek Community Church, South Barrington, IL

## MINISTRY PARTNERS

1Mission  
 Bridges of Hope  
 John Bueno  
 CVW Family Foundation  
 Larry and Gail Dotson  
 Ellis Family Charitable Foundation  
 International Concern Inc  
 Jason Lankow  
 Jeff McMillen  
 National Christian Foundation  
 OneHope  
 Jim Reynolds  
 Monty Simons  
 Specialized Storage Systems, Inc  
 Stout Built  
 Supply Hope  
 Terry Youngblood  
 Billy Ziegler