

ANNUAL REPORT
{en-lah-say} = link

2011



“With ENLACE we began to wake up to a deeper meaning of the Word, and we now know it is our calling to show love to others...The community trusts in what we preach and say because we have worked together to put it into action.”

—Pastor Victorio Paz
Piedra Angular Church, Abelines



LETTER FROM THE DIRECTOR

Dear Friends and Partners,

Thank you for making 2011 another year of extraordinary growth and impact! Your prayers and gifts enabled ENLACE to work with 52 churches that implemented 59 life changing projects impacting more than 42,000 people.

More churches continue to express their interest in partnering with ENLACE. We finished the year with more than 100 churches on a waiting list. We need to raise the funds to hire and train the staff to be able to respond to this amazing opportunity. God is definitely calling his church to transform the spiritual and physical lives of the poorest in El Salvador.

We want to continue to respond to this growing demand of churches in 2012. We aim to partner with 57 churches reaching out to over 112,000 people. Please continue to pray about how you can help us to maintain this extraordinary momentum and impact.

Thank you again for your amazing support and care,

Ron Bueno
Executive Director



More than 150 people from 37 churches attended our annual Pastor and Church Laeder Retreat in 2011



In **2011** ENLACE provided church coaching for **408** pastors and church leaders and trained **615** church and community leaders to implement **59** initiatives benefiting **42,511** people.

251 home gardens benefiting **1,255** people

10* water systems benefiting **26,735** people

146 latrines benefiting **730** people

87** homes benefiting **435** people

9 bridge and road projects benefiting **15,962** people

5 medical clinics benefiting **2,795** people

199 loans for a total of **\$241,570** with a **99%** repayment rate

*Including ongoing projects

**Ten homes were repaired

“Through ENLACE, we receive guidance about how to effectively serve God and our communities. I believe community transformation is a priority for God and should be for us as well...We had neglected this area but God is using ENLACE to equip us and to prepare us.”

*Pastor Rafael González,
Nueva Jerusalem Church, Comecayo, Santa Ana*

www.enlaceonline.org



THE POWER OF A VISION-FILLED CHURCH

Imagine living in a dirt-floored home with a roof made of plastic and scrap metal and walls made of bamboo and crumbling adobe. Imagine living without electricity, a bathroom or a sense of security due to the lack of a front door. Imagine trying to care for seven children in such a place which is made even worse during the annual six-month rainy season.

This was Olga's life until the Siloé Church stepped in and changed it forever.

"We used to have to get up in the middle of the night to cover the children so they wouldn't get soaked. We would rush around to move our clothes...and wait for the rain to pass before going back to sleep," said Olga through tears after hearing that members of the local church in Sirigual wanted to build her and her children a real home.

Olga's situation is not rare in Abelines/San Miguel where families often live on less than one dollar a day and could never dream of building something better on their own. **Nevertheless, humble local churches--congregations comprised of people in similar situations--are working together in sacrifice and faith, responding to God's call to serve their neighbors.**

Through ENLACE's coaching, churches not only learn to see themselves as salt and light in their communities but are also given tools and training on how to live out that vision. ENLACE helps churches organize themselves and identify their internal resources, connect to local organizations, and implement projects specifically identified and designed based on local needs and contexts.



My children ask me and now I can tell them, "We will come out of this poverty!"

-Olga Medrano, pictured below with her children

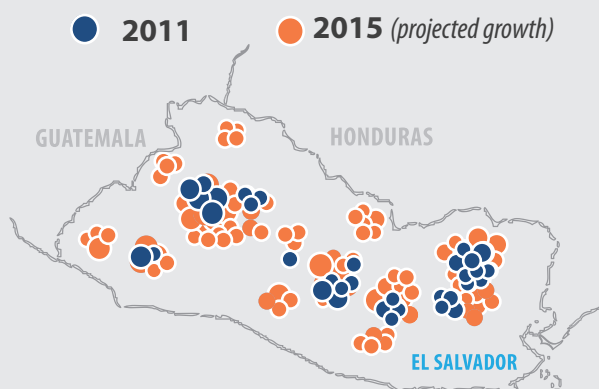


 **video of Olga @ www.enlaceonline.org/olga**

JOIN THE MOMENTUM

	2011	2012	2015
Number of Churches	52	57	100
Number of Projects	59	115	175
People Impacted	42,511	112,000	250,000

 **momentum video @ www.enlaceonline.org/momentum**



VISION 2015

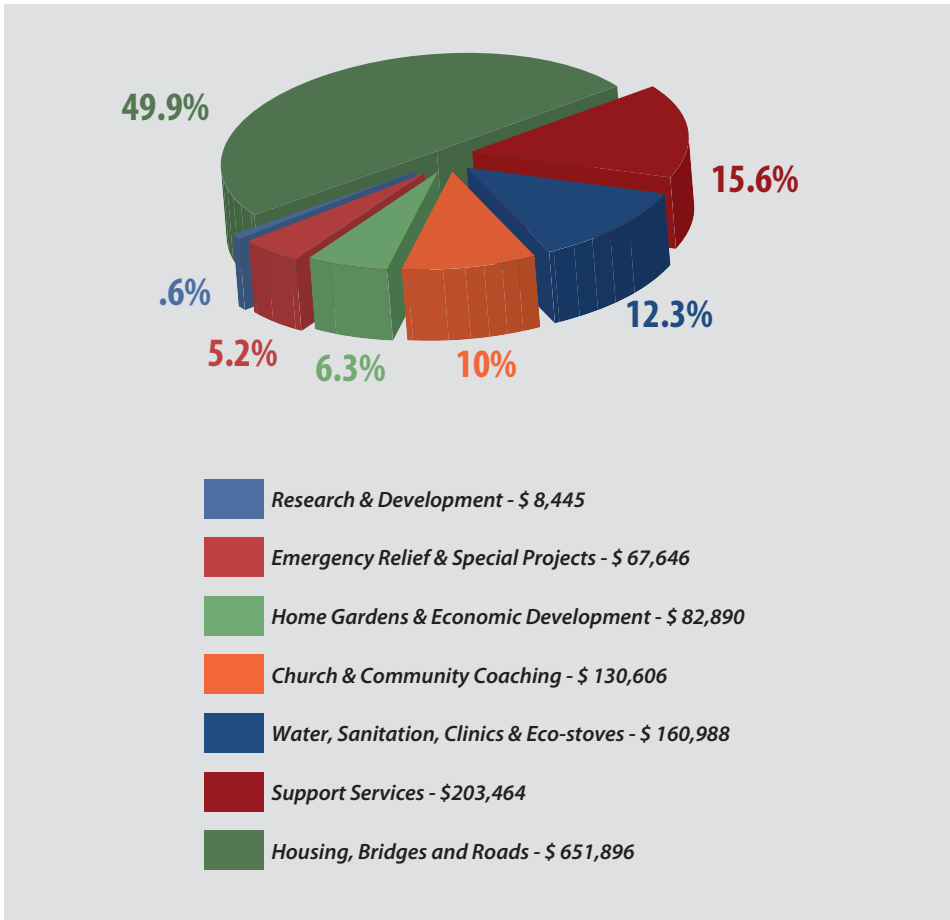
To see **100** churches transforming the spiritual and material lives of **250,000** people in El Salvador.

FINANCIAL OVERVIEW

ENLACE USA REVENUE	2011		2010	
Churches	\$ 708,288	43%	\$ 545,062	33%
Individuals	\$ 222,778	14%	\$ 286,898	18%
Foundations & Institutions	\$ 688,039	42%	\$ 511,380	31%
Corporations	\$ 9,539	< 1%	\$ 9,100	< 1%
Other	\$ 13,005	< 1%	\$ -	
Total	\$ 1,641,649	100%	\$ 1,352,440	100%

ENLACE USA EXPENDITURES	2011		2010	
Administration	\$ 24,260	2%	\$ 27,872	2%
Fundraising	\$ 46,308	3%	\$ 36,323	2%
U.S. Programs	\$ 174,375	11%	\$ 70,669	4%
Missionary Volunteers	\$ 106,370	6%	\$ 122,391	7%
Foreign Programs & Projects	\$ 1,305,935	79%	\$ 1,092,075	66%
Total	\$ 1,657,248	100%	\$ 1,349,330	100%

ENLACE EL SALVADOR EXPENDITURES /// \$ 1,305,935



MINISTRY PARTNERS

- CVW Family Foundation
- Ellis Family Foundation
- Todd and Kathy Gordon
- International Concern, Inc.
- Randall Johnson
- Jason Lankow
- Kay Lemons
- National Christian Foundation
- Jim Reynolds
- Monty Simons
- Specialized Storage Systems, Inc.
- Supply Hope
- World Challenge, Inc.
- Terry Youngblood

U.S. CHURCH PARTNERS

- Broadway Christian Church, Columbia, MO*
- Cornerstone Christian Center, Avondale, AZ
- Cornerstone Community Church, Valencia, CA*
- Covenant Family Fellowship, Gray, ME*
- The Crossing, Costa Mesa, CA
- Crossway Christian Church, Nashua, NH*
- First Baptist Church of San Diego, San Diego, CA*
- The Gateway Church, Des Moines, IA*
- Meadowbrook Community Church, Champaign, IL*
- New Life Assembly of God, Exeter, CA
- North Park Community Church, Fresno, CA*
- Orange County First Assembly of God, Santa Ana, CA*
- Parker Christian Center, Parker, CO
- Seacoast Grace, Cypress, CA*
- Shoreline Community Church, Monterey, CA
- Timberline Church, Fort Collins, CO*
- Vineyard Christian Church, Pataskala, OH*
- Willow Creek Community Church, South Barrington, IL*
- Willow Crystal Lake, Crstal Lake, IL*

U.S. BOARD OF DIRECTORS

- Larry Kasper, President
- John Bueno
- Ron Bueno
- Casey Hale
- Priscilla McKinney
- Cristina Robeck
- Beth Valente

*Churches committed to contributing at least \$5,000 annually towards the Church and Community program